



Nirva FILTER Service

Document Version: 1.03

Table of Contents

Overview	3
Installation	4
Configuration	5
Reference	7
Classes	7
Error codes	7
COMMAND Class	7
FILTER Class	7
Permissions	8
Commands	8
FILTER class	8
RUN	8

Overview

The FILTER service is a NIRVA external service that defines and run filters. A filter is an external executable with parameters.

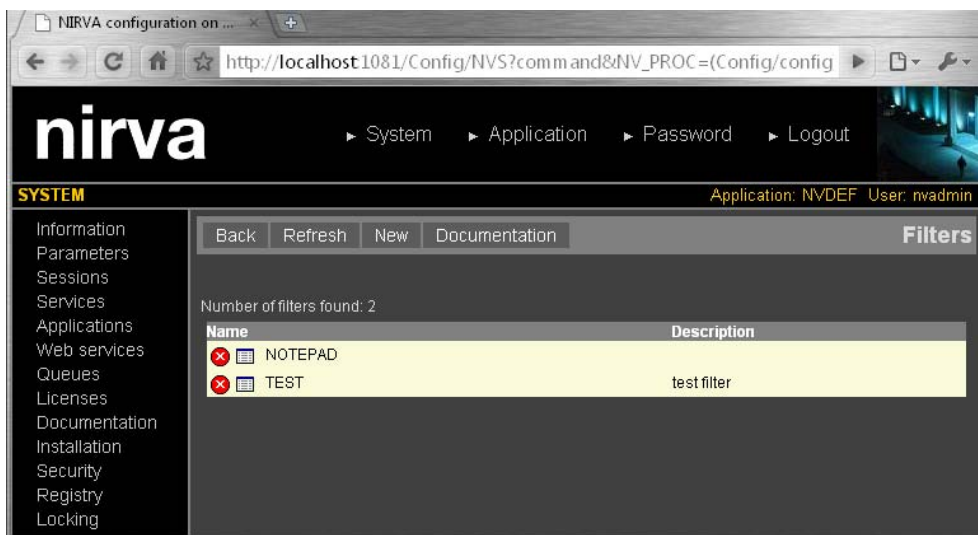
Installation

The FILTER service is delivered as a NIRVA package and can be installed like any NIRVA service directly from the NIRVA configuration web site. Please see the NIRVA configuration chapter in the NIRVA user's guide for further information.

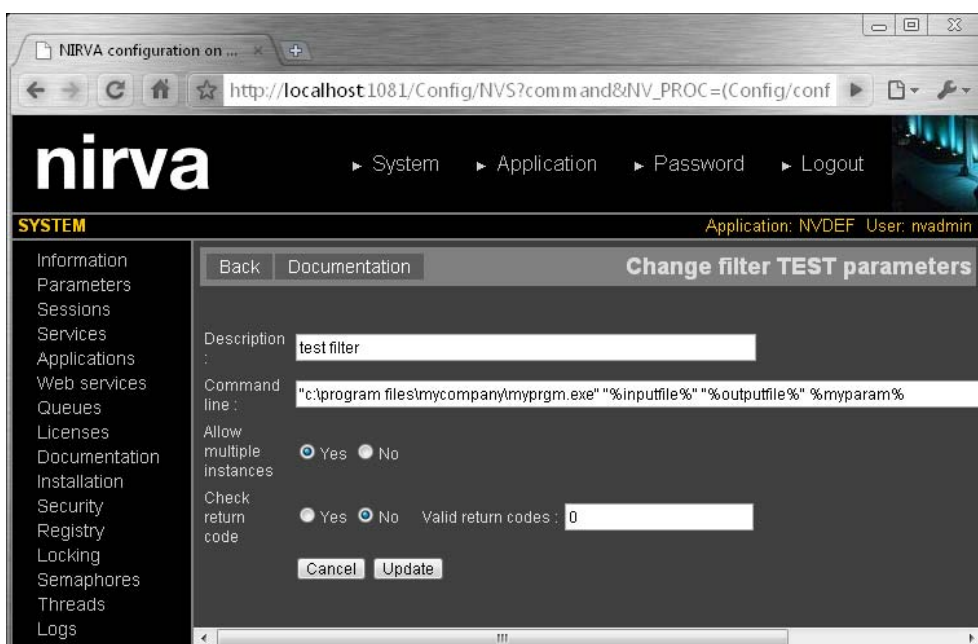
Configuration

The FILTER service configuration is entirely dynamic and available from a web browser.

The configuration provides the management of the filter list:



When creating or editing a filter, here are the available parameters:



Name is the name that uniquely identifies the filter. It cannot have space or special characters.

Description is an optional description.

Command line gives the complete path of the executable. This path can contain some variables that will be evaluated when running the filter. A variable is enclosed in '%' characters. For example "%input%" is a variable named "input". The variable names are case insensitive and cannot contain space or special character.

Allow multiple instance tells if several instances of the filter can be run in parallel. If no, Nirva will synchronize all calls to the filter.

If check return code is check, the filter will generate a Nirva error if the return value is not one of the return values defined in the "valid return codes" field. It must contain return codes that are considered as successful, each of them separated by a ';' (semicolon) character. One can use the '<' and '>' characters to test several values. For example, if the value is "0;1;>10;<20", Nirva will consider that values 0,1,11 to 19 as correct return codes and that the other codes are bad.

Reference

This chapter gives the complete reference of all the FILTER service commands.

Classes

Here are the available FILTER service classes:

Class	Description
FILTER	Main class

Error codes

COMMAND Class

Value	Description
101	Invalid command
102	Invalid command parameter
103	Command not authorized from this source

FILTER Class

Value	Description
101	Cannot save filter list to the registry
102	Cannot get filter list from the registry
103	Filter not found
104	The filter ever exists
105	Cannot create the filter

Value	Description
106	No filter name given

Permissions

Name	Description
ADMIN	Administrate filters (add, remove, modify).

Commands

For each command, the reference gives the command name, the sources for which the command may be used, the command description, the eventual command permissions, the parameter list and the eventual list of objects created by the command.



The parameters described in this chapter are command specific parameters. For general parameters, please refer to the Nirva command syntax chapter.

The available sources are:

- Client for all Nirva client interfaces including Nirva client library (nvc).
- Web for commands from a web browser.
- Procedure for commands from a Nirva procedure.
- Service for commands from service to service

FILTER class

RUN

FILTER:FILTER:RUN

Source	Use Input Container	Use Output Container
--------	---------------------	----------------------

Source	Use Input Container	Use Output Container
Client Web Procedure Service	No	Yes

Description

Run a filter. The filter command line parameters are first evaluated before running the filter. The parameters defined in the filter must be passed as command parameters. For example `NV_CMD=|FILTER:FILTER:RUN| NAME=|MYFILTER| MYPARAM=|param1|` will execute the filter named MYFILTER and will replace the %MYPARAM% parameter given in the command line (if there is one) with the value "param1".

The following parameter names are reserved: PATH, LOCK, TIME_OUT, RET, RET_OK, IN, OUT and all parameters starting with "NV_".

Parameters

NAME	Name of the filter to execute.
TIME_OUT	Optional time out in seconds for the execution of the external program. If this parameter is "-1", Nirva will wait indefinitely until the external program has finished. If the time out is "0", Nirva will not wait for the external program to return. Otherwise, Nirva will wait for the given number of seconds and will signal the time out condition if it occurs by an error. The default value is "-1" (infinite wait).
RET	Name of the Nirva integer object on which Nirva will write the return code of the filter. The default is "RETURN_CODE".

Objects created

RETURN_CODE	Integer object. Contains the return code of the filter.
-------------	---